

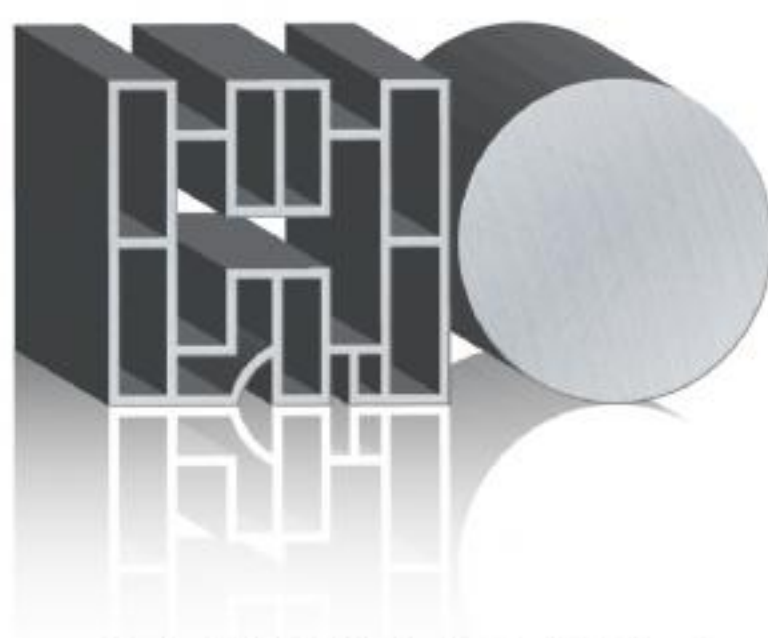


鋒和

FHC
SERIES

NC

金屬圓鋸切斷機
Circular Cold Sawing Machine



多樣鋸切能力
Multiple Sawing Modes

CE ISO-9001:2008



全自動化整廠設備

Complete Workflow Planning

- 多樣切鋸能力 Multiple Sawing Modes
- 切鋸面平滑 Smooth Surface
- 配備最齊全 Fully Equipped
- 精度最高 High Accuracy
- 速度最快 High Speed
- 效率提升 High Efficiency



倒角 Chamfering

◀ 輸送 Conveying

◀ 切斷 Cutting



NC 金屬圓鋸切斷機 Circular Cold Sawing Machine

適 用: 專業切削鋼管、鐵管、不銹鋼管、鋼鐵/銅鋁實心素材、銅鋁/鋼管、異形材料、成型門框及鋼管鋁管之滾圓切斷。

產品種類: 手動型、氣動型、半自動型、全自動型、電腦型切斷專門機。

Applications: For Cutting Steel, Ferrous Bar Steel Pipe, Ferrous Pipe, Stainless Steel Pipe, Solid Stock, Aluminium and Bronze Profiled Materials, Door Frame Steel Pipe and Aluminium Pipe.

Models: Manual, Air, Semi Automatic, Fully Automatic Operation, CNC Cutting Aluminium Pipe.

鋒和機械 Fong Ho Machinery
堅持為客戶著想 For Your Satisfaction!
做最好的人性化機器 Ultimate Circular Sawing Machines

3~6 金屬圓鋸切斷機
Circular Cold Sawing Machine

3 手動型
Manual Type



FHC-275



FHC-350D

3 氣動型
Pneumatic Type



FHC-275P



FHC-350P

4 半自動型
Semi-automatic Type



FHC-275SA



FHC-350SA

4 油壓半自動型
Hydraulic Semi-automatic Type



FHC-425SA



FHC-485SA

7~10 自動型金屬圓鋸切斷機
Automatic Type Metal Sawing Machine

7 氣壓型
Pneumatic Type



FHC-300A



FHC-350A

8 油壓型
Hydraulic Type



FHC-475AV



FHC-485AV

8 電腦型
Computer Type



FHC-485NC

11~14 自動型銅鋁金屬圓鋸切斷機

Automatic Type Aluminum Copper Sawing Machine

11

氣壓半自動型
Pneumatic
Semi-automatic
Type



11

油壓半自動型
Hydraulic
Semi-automatic
Type



12

氣壓自動型
Pneumatic
Automatic Type



12

油壓自動型
Hydraulic
Automatic Type



12

電腦型
Computer Type



15~16 全自動金屬圓鋸切斷機

Fully Automatic Circular Sawing Machine

FHC-360AB-1S
切鋼鐵 For Steel & Iron Cutting

FHC-400AB-1S
切銅鋁 For Aluminum & Copper Cutting



Customized
本機依客戶指定製作

手動型 Manual Type

FHC-275



- 手動操作
- 雙夾鉗
- 適合鋸片
HSS Ø250~Ø275mm
Ø250mm (標準)
- 2段速度
- 活動安全護蓋 (選配)

- Manual operation
- Double vises
- Sawblade
HSS Ø250~Ø275mm
Ø250mm (Std.)
- 2 Speeds
- Movable guard (Opt.)

氣動型 Pneumatic Type

FHC-275P



- 自動氣壓雙夾鉗
- 手動鋸切進給
- 適合鋸片
HSS Ø250~Ø275mm
Ø250mm (標準)
- 2段速度
- 活動安全護蓋 (選配)

- Automatic pneumatic double vises
- Manual cutting feed
- Sawblade
HSS Ø250~Ø275mm
Ø250mm (Std.)
- 2 Speeds
- Movable guard (Opt.)

FHC-350D



- 手動操作
- 雙夾鉗
- 適合鋸片
HSS Ø250~Ø350mm
Ø350mm (標準)
- 2段速度
- 活動安全護蓋 (選配)

- Manual operation
- Double vises
- Sawblade
HSS Ø250~Ø350mm
Ø350mm (Std.)
- 2 Speeds
- Movable guard (Opt.)

FHC-350P



- 自動氣壓雙夾鉗
- 手動鋸切進給
- 適合鋸片
HSS Ø250~Ø350mm
Ø350mm (標準)
- 2段速度
- 活動安全護蓋 (選配)

- Automatic pneumatic double vises
- Manual cutting feed
- Sawblade
HSS Ø250~Ø350mm
Ø350mm (Std.)
- 2 Speeds
- Movable guard (Opt.)

半自動型 Semi-automatic Type

FHC-275SA



- 自動氣壓雙夾鉗
- 自動鋸切進給
- 適合鋸片
HSS Ø250~Ø275mm
Ø250mm (標準)
- 2段速度
- 活動安全護蓋 (選配)
- Automatic pneumatic double vises
- Automatic cutting feed
- Sawblade
HSS Ø250~Ø275mm
Ø250mm (Std.)
- 2 Speeds
- Movable guard (Opt.)

油壓半自動型 Hydraulic Semi-automatic Type

FHC-425SA

迴轉角度切削
Swivelling angle
(L45°, R30°)



- 半自動夾料及切斷
- 適合鋸片
HSS Ø250~Ø425mm
Ø350mm (標準)
- 刀具間隙補償裝置 (油壓式)
- 活動安全護蓋 (選配)
- Semi-automatic operation for clamping and cutting off
- Sawblade
HSS Ø250~Ø425mm
Ø350mm (Std.)
- Tool gap compensation device (Hydraulic)
- Movable guard (Opt.)

FHC-350SA



- 自動氣壓雙夾鉗
- 自動鋸切進給
- 適合鋸片
HSS Ø250~Ø350mm
Ø350mm (標準)
- 2段速度
- 活動安全護蓋 (選配)
- Automatic pneumatic double vises
- Automatic cutting feed
- Sawblade
HSS Ø250~Ø350mm
Ø350mm (Std.)
- 2 Speeds
- Movable guard (Opt.)

FHC-485SA

迴轉角度切削
Swivelling angle
(L45°, R30°)



- 半自動夾料及切斷
- 適合鋸片
HSS Ø250~Ø425mm
Ø350mm (標準)
- 刀具間隙補償裝置 (油壓式)
- 活動安全護蓋 (選配)
- 變頻器 + 變頻專用馬達
- 伺服馬達 (選配)
- Semi-automatic operation for clamping and cutting off
- Sawblade
HSS Ø250~Ø425mm
Ø350mm (Std.)
- Tool gap compensation device (Hydraulic)
- Movable guard (Opt.)
- Frequency inverter
- Servo Motor (Opt.)

標準配備 Standard Outfit

馬達	Motor
開關	Switch
冷卻系統	Cooling System
可調式擋料器	Adjustable Stop
調整工具	Service Tools
切削護蓋	Safety Guard

P5A FHC-275 Series



P5B FHC-350 Series



選購配備 Optional Outfit

特殊夾具	Special Vise
圓鋸片	Sawblade
切削液	Cutting Fluid
活動安全切削護蓋	Movable Safety Guard

P5C FHC-275 Series



P5D FHC-350 Series



鋸片節距 Recommended Pitch of Sawblade

實心棒材 Solid Bar	節距 Pitch	管類 Pipe	節距 Pitch
Ø10 - Ø15	4 - 6	薄管 Thin Pipe	3 - 6
Ø15 - Ø20	6 - 8	中薄管 Medium Pipe	6 - 8
Ø20 - Ø30	8 - 10	厚管 Thick pipe	8 - 12
Ø30 - Ø50	10 - 12	Choose correct pitch of sawblade for perfect cutting performance. 請使用正確節距之鋸片，確保鋸切效果。	
Ø50 - Ø70	12 - 14		
Ø70 - Ø80	14 - 16		

鋸切能力 Cutting Capacity

Model	FHC-275 Series		FHC-350 Series		FHC-425SA / FHC-485SA					
	Sawblade Size		Sawblade Size		Ø350mm			Ø400mm		Ø425mm
Head Swivel	90°	45°	90°	45°	90°	45°	30°	90°	45°	90°
● mm	-	-	60	50	70	60	50	80	70	90
■ mm	-	-	50 x 50	45 x 45	65 x 65	55 x 55	45 x 45	65 x 65	55 x 55	75 x 75
○ mm	75	60	110	75	125	115	100	125	115	130
L mm	75 x 75	55 x 55	110 x 110	90 x 90	110 x 110	100 x 100	75 x 75	125 x 125	120 x 120	125 x 125
□ mm	75 x 75	55 x 55	110 x 110	90 x 90	110 x 110	100 x 100	75 x 75	125 x 125	120 x 120	125 x 125
▭ mm	75 x 75	55 x 55	110 x 110	90 x 90	110 x 110	100 x 100	75 x 75	125 x 125	120 x 120	125 x 125
▭ mm	75 x 70	60 x 55	110 x 90	110 x 50	120 x 50	120 x 50	70 x 50	160 x 50	150 x 60	160 x 100

規格

Specifications

型式	Model		FHC-275	FHC-275P	FHC-275SA
主軸馬達	Spindle Motor		220V Single Ph. 單相 (Opt. 選配)		—
			H 3.0HP/1.5HP (2/4 Pole 變極) 50/60HZ (Std. 標準)		
			L 1.5HP/1.0HP (4/8 Pole 變極) 50/60HZ (Opt. 選配)		
主軸轉速	Spindle Speed	RPM	H 60HZ 120/60, 50HZ 100/50 (Std. 標準)		
			L 60HZ 60/30, 50HZ 50/25 (Opt. 選配)		
頭部迴轉角度	Head Swivel		90° / 45°		
夾鉗型式	Vise		Double (雙邊)		
冷卻泵馬達	Coolant Pump Motor		1/8 HP / 90W		
鋸片尺寸	Sawblade Size				
外徑	External Diameter	mm	HSSØ250-Ø275 (10"-11"), Ø250 (Std. 標準)		
軸徑	Bore	mm	Ø32	Ø32	Ø32
銷孔	Pin Holes	mm	2 x Ø11 x PCD63	2 x Ø11 x PCD63	2 x Ø11 x PCD63
空壓壓力	Air Pressure		—		
液壓泵馬達	Hydraulic Pump Motor		—		
工作壓力	Operation Pressure		—		
機械尺寸	Machine Dimensions (LxWxH)	mm	1400 x 870 x 1750	1400 x 870 x 1750	1400 x 1070 x 1750
包裝尺寸	Packing Dimensions (LxWxH)	mm	750 x 880 x 1450	750 x 880 x 1450	750 x 940 x 1450
		inch	30" x 35" x 58"	30" x 35" x 58"	30" x 37" x 58"
淨重	Net Weight	kgs	240 (528 lbs)	240 (528 lbs)	270 (594 lbs)
毛重	Gross Weight	kgs	300 (682 lbs)	310 (682 lbs)	330 (726 lbs)

型式	Model		FHC-350D FHC-350P	FHC-350SA	FHC-425SA	FHC-485SA
主軸馬達	Spindle Motor		3HP/ 2HP (4/8 Pole 變極) 50 / 60HZ or 4HP/ 3HP (2/4 Pole 變極) 50 / 60HZ		A 5HP 2 pole or 3HP 4 pole (Std. 標準) L RPM 50HZ/60HZ 70 / 35	A 5HP 2 pole 極 (Opt. 選配) B 5HP 4 pole 極 (Std. 標準) 變頻器 Frequency Inverter 5KW / 7.5HP
主軸轉速	Spindle Speed	RPM	L 50HZ 44 / 22 60HZ 52 / 26 (Opt. 選配) M 50HZ 58 / 29 60HZ 70 / 35 (Std. 標準) H 50HZ 86 / 43 60HZ 105 / 52 (Opt. 選配)		H RPM 50HZ/60HZ 120 / 60 B 3HP 6 pole 極 (Opt. 選配) RPM 50HZ 35 / 20 RPM 60HZ 42 / 23	A L RPM 40-140 (Opt. 選配) HRPM 70-240 B L RPM 20-70 (Std. 標準) HRPM 35-120
頭部迴轉角度	Head Swivel		90° / 45°		L 45° 90° R30°	
夾鉗型式	Vise		Double (雙邊)		Single (單邊)	
冷卻泵馬達	Coolant Pump Motor		1/8 HP / 90W		1/8 HP / 90W	
鋸片尺寸	Sawblade Size					
外徑	External Diameter	mm	HSSØ250-Ø350 (10"-14") Ø350 (Std. 標準)		HSSØ250-Ø425 Ø350 (Std. 標準)	HSSØ250-Ø425 Ø350 (Std. 標準)
軸徑	Bore	mm	Ø32	Ø32	Ø32	Ø32
銷孔	Pin Holes	mm	2 x Ø11 x PCD63	2 x Ø11 x PCD63	2 x Ø11 x PCD63	2 x Ø11 x PCD63
空壓壓力	Air Pressure		—		6 kg/cm ² (120 L/min)	
液壓泵馬達	Hydraulic Pump Motor		—		2 HP 4P	
工作壓力	Operation Pressure		—		20-30 kg/cm ²	
機械尺寸	Machine Dimensions (LxWxH)	mm	1400 x 1050 x 1900	1400 x 1050 x 1900	1300 x 1400 x 1900	1300 x 1400 x 1900
包裝尺寸	Packing Dimensions (LxWxH)	mm	750 x 1060 x 1510	750 x 1060 x 1510	1460 x 820 x 2220	1460 x 1050 x 2230
		inch	30" x 42" x 60"	30" x 42" x 60"	58" x 33" x 88"	58" x 42" x 88"
淨重	Net Weight	kgs	300 (660 lbs)	340 (748 lbs)	710 (1565 lbs)	709 (1563 lbs)
毛重	Gross Weight	kgs	360 (792 lbs)	400 (880 lbs)	960 (2116 lbs)	959 (2114 lbs)

The manufacturer always performs product improvements to achieve the best possible performance. All models specifications, dimensions and design characteristics shown in this catalogue are subject to change without notice. Product specifications are based on the actual machines. The manufacturer holds explanation rights.

自動氣壓型
Air Automatic Type**FHC-300A**

- 氣壓自動型
- 使用HSS鋸片， $\varnothing 250\sim\varnothing 325\text{mm}$ ， $\varnothing 300\text{mm}$ (標準)
- 送料，夾料，切斷自動循環動作
- Pneumatic automatic type
- HSS sawblade $\varnothing 250\sim\varnothing 325\text{mm}$, $\varnothing 300\text{mm}$ (Std.)
- Automatic bar feeding, clamping and cutting off

**自動氣壓型**
Air Automatic Type**FHC-350A**

- 氣壓自動型
- 使用HSS鋸片， $\varnothing 250\sim\varnothing 350\text{mm}$ ， $\varnothing 350\text{mm}$ (標準)
- 送料，夾料，切斷自動循環動作
- Pneumatically automatic type
- HSS sawblade $\varnothing 250\sim\varnothing 350\text{mm}$, $\varnothing 350\text{mm}$ (Std.)
- Automatic bar feeding, clamping and cutting off



自動油壓型 Hydraulic Automatic Type

FHC-475AV



FHC-485AV

FHC-475AV / FHC-485AV

- 本機採人機介面控制，觸控螢幕，操控簡單
- 易學易懂，功能超強
- 使用HSS鋸片 $\varnothing 250\sim\varnothing 450\text{mm}$ ， $\varnothing 350\text{mm}$ (標準)
- 長度數字顯示裝置
- 刀具間隙補償裝置(油壓式)
- Human/machine interface control and touch screen provides user friendly operation
- HSS sawblade $\varnothing 250\sim\varnothing 450\text{mm}$, $\varnothing 350\text{mm}$ (Std.)
- Easy to operate. Extremely powerful functions
- Length numeral monitor
- Sawblade gap compensation device (Hydraulic type)

- 變頻器 + 變頻馬達(標配)
- 主軸伺服馬達驅動(選配)
- Frequency Inverter + Frequency Motor (Std.)
- Spindle Servo Motor Drive (Opt.)

電腦型 Computer Type

FHC-485NC



- 本機採人機介面控制，操控簡單(伺服馬達驅動送料)
- 易學易懂，功能超強(適合少量多樣鋸切)
- NC 觸控式螢幕，搭配數值控制，鋸切精準
- 使用HSS鋸片 $\varnothing 250\sim\varnothing 450\text{mm}$ ， $\varnothing 350\text{mm}$ (標準)
- 主軸伺服馬達驅動
- 刀具間隙補償裝置(油壓式)
- Human/machine interface control provides user friendly operation.(Servomotor-driven in feed)
- Easy to operate. Extremely powerful functions makes it ideal for small lot flexible cutting requirements.
- NC Touch sensing screen. Numerically controlled. High cutting accuracy.
- HSS sawblade $\varnothing 250\sim\varnothing 450\text{mm}$, $\varnothing 350\text{mm}$ (Std.)
- Spindle is drive by servo motor
- Sawblade gap compensation device. (Hydraulic type)

P9A FHC-300A FHC-350A FHC-355NA



氣壓切削頭部及夾鉗。
Headsaw and vise are pneumatically driven.

P9C FHC-485AV FHC-475AV



可調式浮動夾鉗及長度數字顯示裝置。
Adjustable floating vise and length numeral display unit.

P9E FHC-410NC FHC-485NC



- 送料採伺服馬達驅動
- 可調式浮動夾鉗
- 送料精度可達 0.01mm
- Servo motor feed drive
- Adjustable floating vise
- Feed accuracy up to 0.01mm

P9B FHC-300A FHC-350A FHC-355NA



氣壓送料浮動式夾鉗。
Pneumatic feeding floating vise.

P9D FHC-475AV FHC-485AV FHC-485NC



V型夾鉗多支式。
Multiple "V" vise

標準配備 Standard Outfit

馬達	Motor
電器控制系統	Electrical Control System
冷卻系統	Complete Cooling System
油壓系統	Pneumatic System or Hydraulic System
調整工具	Tools for Adjustment

選購配備 Optional Equipment

圓鋸片	Sawblade
安全護蓋	Movable Safety Guard
切削液	Cutting Fluid
送料行程	Feeding Stroke
	1000mm 1200mm 1500mm
氣壓型最長	Pneumatic 1000mm
油壓型最長	Hydraulic 1500mm
伺服馬達送料最長	Servo Motor 1000mm

鋸片節距 Recommended Pitch of Sawblade

實心棒材 Solid Bar	節距 Pitch	管類 Pipe	節距 Pitch
Ø10 - Ø15	4 - 6	薄管 Thin Pipe	3 - 6
Ø15 - Ø20	6 - 8	中薄管 Medium Pipe	6 - 8
Ø20 - Ø30	8 - 10	厚管 Thick wall pipe	8 - 12
Ø30 - Ø50	10 - 12	Choose correct pitch of sawblades for perfect cutting performance. 請使用正確節距之鋸片，確保鋸切效果。	
Ø50 - Ø70	12 - 14		
Ø70 - Ø80	14 - 16		


鋸切能力 Cutting Capacity

Model	FHC-300A	FHC-350A	475AV	485AV	485NC
Head Swivel	90°	90°	90°	90°	90°
● mm	50	60	76	76	76
■ mm	40 x 40	50 x 50	65 x 65	65 x 65	65 x 65
○ mm	90	110	125	125	125
L mm	90 x 90	100 x 100	125 x 125	125 x 125	125 x 125
□ mm	90 x 90	100 x 100	125 x 125	125 x 125	125 x 125
▭ mm	90 x 90	100 x 100	125 x 125	125 x 125	125 x 125
▭ mm	110 x 50	110 x 50	130 x 80	130 x 80	130 x 80

規格

Specifications

型式	Model		FHC-300A	FHC-350A
主軸馬達	Spindle Motor		3.0HP/1.5HP 2/4P (變極) 50/60 HZ	4HP/3HP 2/4Pole (變極) 50/60 HZ or 3HP/2HP (4/8 Pole 變極) 50/60 HZ
主軸轉速	Spindle Speed	RPM	H 50HZ 58/29 (Std.標準) H 60HZ 70/35 (Std.標準) L 50HZ 86/43 (Opt.選配) L 60HZ 105/52 (Opt.選配)	L 50HZ 44/22 (Opt.選配) L 60HZ 52/26 (Opt.選配) M 50HZ 58/29 (Std.標準) M 60HZ 70/35 (Std.標準) H 50HZ 86/43 (Opt.選配) H 60HZ 105/52 (Opt.選配)
頭部迴轉角度	Head Swivel		90°	90°
夾鉗型式	Vise		Double (雙邊)	Double (雙邊)
冷卻泵馬達	Coolant Pump Motor		1/8HP / 90W	1/8HP / 90W
虎鉗最大夾持	Max. Clamping Capacity	mm	100	110
鋸片尺寸	Sawblade Size			
外徑	External Diameter	mm	HSS Ø250-Ø325 (10"-13") Ø300 (Std.標準)	HSS Ø250-Ø350 (10"-14") Ø350 (Std.標準)
軸徑	Bore	mm	Ø32	Ø32
銷孔	Pin Holes	mm	2 x Ø11 x PCD63	2 x Ø11 x PCD63
送料行程	Feeding Stroke			
單行程	Single Stroke	mm	5 - 700 (27")	5 - 700 (27")
雙行程	Double Stroke	mm	5 - 1400 (54")	5 - 1400 (54")
參行程	Three Stroke	mm	5 - 2100 (81")	5 - 2100 (81")
工作壓力	Operation Pressure		6 kg/cm ² (120L/min)	6 kg/cm ² (120L/min)
機械尺寸	Machine Dimensions (LxWxH)	mm	2200 x 1200 x 1600	2200 x 1200 x 1600
包裝尺寸	Packing Dimensions (LxWxH)	mm	2100 x 1050 x 1850	2100 x 1050 x 1850
		inch	83" x 42" x 73"	83" x 42" x 73"
淨重	Net Weight	kgs	850 (1870 lbs)	900 (1980 lbs)
毛重	Gross Weight	kgs	1000 (2200 lbs)	1050 (2310 lbs)

型式	Model		FHC-475AV	FHC-485AV	FHC-485NC
主軸馬達	Spindle Motor		A 5HP / 3HP 2/4 Pole 變極 (Std.標準)	5HP 4Pole 極	伺服馬達 Servo Motor 4.5KW
主軸轉速	Spindle Speed	RPM	L 50HZ / 60HZ 70/35 H 50HZ / 60HZ 120/60 B 3HP 6 Pole 極 (Opt.選購) 50HZ 32/20 60HZ 42/23	A+B L / H 無段轉速 Continuously Variable Transmission B L 20RPM -70 H 35RPM -120 B L 40RPM -140 H 70RPM -240	
A 4段 B 2段	A 4 Sections RPM B 2 Sections RPM				
變頻器	Frequency Inverter		—	7 1/2HP (5.5KW)	—
頭部迴轉角度	Head Swivel		90°	90°	90°
夾鉗型式	Vise		Single (單邊)	Single (單邊)	Single (單邊)
冷卻泵馬達	Coolant Pump Motor		1/4HP / 180W	1/4HP / 180W	1/4HP / 180W
虎鉗最大夾持	Max. Clamping Capacity	mm	Ø150	Ø150	Ø150
鋸片尺寸	Sawblade Size				
外徑	External Diameter	mm	HSS Ø250-Ø450 (10"-17"), Ø350 (Std.標準)		
軸徑	Bore	mm	Ø32	Ø32	Ø32
銷孔	Pin Holes	mm	2 x Ø11 x PCD63	2 x Ø11 x PCD63	2 x Ø11 x PCD63
送料行程	Feeding Stroke				
單行程	Single Stroke	mm	5 - 650 (26")	5-650 (26")	0-700(Std.標準)
雙行程	Double Stroke	mm	5 - 1300 (51")	5-1300 (51")	0-1000(Opt.選購)
參行程	Three Stroke	mm	5 - 1950 (77")	5-1950 (77")	
長度數字顯示裝置	Length Display	mm	0 - 650	0-650	—
送料伺服馬達	Feeding Servo Motor		—	—	1KW
液壓泵馬達	Hydraulic Pump Motor		3HP (4P)	3HP (4P)	3HP (4P)
工作壓力	Operation Pressure		25-35 kg/cm ²	25-35 kg/cm ²	25-35 kg/cm ²
機械尺寸	Machine Dimensions (LxWxH)	mm	1950 x 1300 x 2000	2200 x 1400 x 2200	2200 x 1400 x 2200 (Std.標準) 2200 x 1400 x 2500 (Opt.選購)
包裝尺寸	Packing Dimensions (LxWxH)	mm	1230 x 2270 x 2240	2280 x 1490 x 2250	2280 x 1490 x 2250 (Std.標準) 2580 x 1490 x 2250 (Opt.選購)
		inch	87" x 52" x 87"	90" x 63" x 87"	90" x 63" x 89"
淨重	Net Weight	kgs	1350 (2976 lbs)	1450 (3190 lbs)	1450 (3190 lbs)
毛重	Gross Weight	kgs	1550 (3417 lbs)	1650 (3630 lbs)	1650 (3630 lbs)

The manufacturer always performs product improvements to achieve the best possible performance. All models specifications, dimensions and design characteristics shown in this catalogue are subject to change without notice. Product specifications are based on the actual machines. The manufacturer holds explanation rights.

氣壓半自動型 Pneumatic Semi-automatic

FHC-355SA



油壓半自動型 Hydraulic Semi-automatic

FHC-400SA



L45°, R30°
迴轉角度切削
Swivelling angle

雙頭45°鋁切角機 45° Double Miter cut-off Saw

DB-350



- 採用雙刀式鋸切，氣壓式夾緊工件。
- 鋸切時自動噴油，較一般型節省2/3時間。
- Double Sawblades cut synchronically
Pneumatically operated workpiece clamping.
- Automatic oil lubrication while in cutting.
It saves 2/3 of time than the conventional cutting equipments.

- 隱藏式鋸片可以很安全的上下工件。
- 腳踏式開關，可自動壓料與鋸料。
- 自動噴油，切面無毛邊，鋸片更耐用。
- 一次可單支或多支鋸切多種少量或大量生產皆適宜。
- Fully guarded sawblade allows safe loading and unloading of workpieces.
- Automatic workpiece clamping and cutting off operations are controlled by a foot switch.
- Automatic oil lubrication ensures burr-free cutting quality and long service life of the sawblade.
- Single or multiple workpieces can be cut at one time.
- Small or mass production are both allowed.

半自動鋁鋸料機 Semi-automatic Sawing Machines



BL-18 氣壓半自動型
Pneumatic Semi-automatic Type

厚度 Thickness
寬度 Width



BL-A610 氣壓半自動型
Pneumatic Semi-automatic Type

可做45°切角
Performing 45°
angular cut



BL-B610
油壓半自動型
Hydraulic
Semi-automatic
Type

氣壓自動型
Air Automatic Type

FHC-355NA



油壓自動型 銅鋁金屬
非鐵金屬切削

Hydraulic Automatic Type
Aluminum Copper
For-cutting non-ferrous metals

FHC-410AV



NC 銅鋁金屬
電腦型 非鐵金屬切削
Aluminum Copper
For-cutting non-ferrous metals

NC 觸控式螢幕操作面板。
NC touch control
Screen Operation
Kneading board.

FHC-410NC (全罩式/Fully Safety Guard)



FHC-410NC

- 送料採伺服馬達驅動
- 可調式浮動夾鉗
- 送料精度可達0.01mm
- 變頻器 + 變頻馬達
- Servo motor driven feeder
- Adjustable floating vise
- Feed accuracy up to 0.01mm
- Frequency inverter + Inverter Motor

標準配備 Standard Equipment



P13A FHC-410 Series
銅鋁鋸切頭部。
Copper Aluminum
Cutting Sawhead.



P13B FHC-410 Series
V型夾鉗多支式。
Multiple "V" vise.



P13C FHC-410 AV
可調式浮動夾鉗及長度數字顯示裝置。
Adjustable floating vise and length
numeral display unit.

選購配備 Oprional Equipment



- 油壓鋸切，鋸切斷頭部，頭部全罩式安全護蓋(選配)。
- 送料全罩式，安全護蓋(選配)。
- Hydraulically operated saw head for cutting aluminium fully safty guard (Opt.)
- Hydraulically operated saw head for cutting aluminium fully safty guard (請提供翻譯)



集塵設備(選配)。
Dust collection
Device (Opt.)

鋸切能力 Cutting Capacity

Model	FHC-355SA		FHC-400SA		DB-350	BL-18		BL-A610 BL-B610		FHC-410AV FHC-410NC
	Ø355mm		Ø405mm		Ø355mm	Ø455mm		Ø610mm		Ø355-455mm
Head Swivel	90°	45°	90°	45°	L45 R45°	90°	45°	90°	45°	90°
● mm	80	75	130	120	75	120	100	200	160	150
■ mm	75 x 75	75 x 75	100 x 100	90 x 90	75 x 75	110 x 110	100 x 100	160 x 160	120 x 120	175
○ mm	110	75	130	120	75	120	110	200	160	175
L mm	110 x 110	85 x 85	120 x 120	100 x 100	100 x 100	110 x 110	100 x 100	160 x 160	120 x 120	150 x 150
□ mm	110 x 110	85 x 85	120 x 120	100 x 100	100 x 100	110 x 110	100 x 100	160 x 160	120 x 120	150 x 150
□ mm	110 x 110	85 x 85	130 x 100	100 x 100	100 x 100	110 x 110	100 x 100	160 x 160	120 x 120	150 x 120
□ mm	110 x 90	85 x 60	130 x 60	130 x 50	100 x 60	200 x 100	120 x 100	300 x 100	200 x 100	150 x 100

型式	Model		BL-18	BL-A610	BL-B610	DB-350
鋸切角度	Cutting Angle		90° & 45°	90° & 45°	90° & 45°	45° (Fixed)
鋸切寬度	Maximum Width of Cut	mm	200x100, 110x110	300x100, 160x160, 200x100, 120x120		100
鋸切厚度	Maximum Thickness of Cut	mm	10-120	10-200	10-200	100
鋸軸轉速	Saw Arbor Speed	RPM	3200	1900	2000	3440
鋸片尺寸	Sawblade Size	mm	Ø355-Ø455 x Ø25.4孔(Hole)	Ø455-Ø610 x Ø32	Ø455-Ø610 x Ø32	Ø355 x Ø25.4孔(Hole) x 80z or 100z or 120z
鋸切速度	Cycle Speed		10-15 cycle /min	10-15 cycle /min	10-15 cycle /min	10-15 cycle /min
工作台可使用面積	Table Area	mm	370 x 650	550 x 650	550 x 650	305 x 812
工作台面離地高度	Table Height From Floor	mm	850	1030	1050	820
馬達	Motor		5HP/2P	7 1/2HP	7.5HP/4P	1HP/2P
油泵	Oil Pump kg/cm ²		—	1HP/4P	—	—
空需壓力	Air Pressure	kg/cm ²	5-6kg/cm ²	4-6kg/cm ²	4-6kg/cm ²	5kg/cm ² (120L/min)
送料架長度	Length of Roller	mm	可視貴公司所需長短而訂制及高度 Made to meet the required length and height			
機械尺寸	Machine Dimension	mm	840 x 660 x 1150	1050 x 1030 x 1500	1360 x 1400 x 1700	570 x 840 x 1300
裝箱尺寸	Packing Dimension	mm	890 x 740 x 1350	1170 x 1150 x 1620	1480 x 1520 x 1820	1300 x 890 x 1500
淨重	Net Weight	kgs	350 (770 lbs)	500 (1100 lbs)	750 (1650 lbs)	310 (682 lbs)
毛重	Gross Weight	kgs	450 (990 lbs)	600 (1320 lbs)	850 (1870 lbs)	410 (902 lbs)

規格

Specifications

型式	Model		FHC-355SA	FHC-355NA
主軸馬達	Spindle Motor		5HP (4 Pole) 50 / 60 HZ	5HP (4 Pole) 50 / 60
主軸轉速	Spindle Speed	RPM	50HZ 3200 60HZ 3200	50HZ 3200 60HZ 3200
頭部迴轉角度	Head Swivel		90° / 45°	90°
夾鉗型式	Vise		Double (雙邊)	Double (雙邊)
冷卻泵馬達	Coolant Pump Motor		1/8HP / 90W	1/8HP / 90W
虎鉗最大夾持	Max. Clamping Capacity	mm	Ø150	Ø150
鋸片尺寸	Sawblade Size			
外徑	External Diameter	mm	TIP Ø305-Ø355 (12"-14") Ø355 (Std.標準)	TIP Ø305-Ø355 (12"-14") Ø355 (Std.標準)
軸徑	Bore	mm	Ø25.4	Ø25.4
銷孔	Pin Holes	mm	—	—
送料行程	Feeding Stroke			
單行程	Single Stroke	mm	—	5 - 700 (27")
雙行程	Double Stroke	mm	—	5 - 1400 (54")
參行程	Three Stroke	mm	—	5 - 2100 (81")
送料伺服馬達	Feeding Servo Motor		—	—
液壓泵馬達	Hydraulic Pump Motor		—	—
工作壓力	Operation Pressure		6 kg/cm ² (120L/min)	6 kg/cm ² (120L/min)
機械尺寸	Machine Dimensions (LxWxH)	mm	1400 x 1050 x 1800	2200 x 1400 x 1600
包裝尺寸	Packing Dimensions (LxWxH)	mm	760 x 1060 x 1710	2070 x 1310 x 1960
		inch	30" x 42" x 60"	83" x 42" x 73"
淨重	Net Weight	kgs	360 (793 lbs)	850 (1873 lbs)
毛重	Gross Weight	kgs	410 (904 lbs)	1000 (2200 lbs)

型式	Model		FHC-400SA	FHC-410AV	FHC-410NC
主軸馬達	Spindle Motor		5HP (或or) 7-1/2HP (4 Pole) 50 / 60 HZ	7 1/2HP (5.5KW)	7 1/2HP (5.5KW) (Std.標準) 10 HP (7.5KW) (Opt.選購)
主軸轉速	Spindle Speed	RPM	50HZ 3200 60HZ 3200	2400-4000	2400-4000
變頻器	Frequency Inverter			10 HP (7.5KW) (Opt.選購)	10 HP (7.5KW) (Std.標準) 15 HP (11KW) (Opt.選購)
頭部迴轉角度	Head Swivel		L45° / 90° R30°		90°
夾鉗型式	Vise		Single (單邊)		Single (單邊)
冷卻泵馬達	Coolant Pump Motor		90W / 1/8HP		180W / 1/4HP
虎鉗最大夾持	Max. Clamping Capacity	mm	Ø150	Ø150 (Std.標準)	Ø175 - Ø200 (Opt.選購)
鋸片尺寸	Sawblade Size				
外徑	External Diameter	mm	TIP Ø405-Ø455 Ø405 (Std.標準)	TIP Ø355 - Ø455 (Ø405 Std.標準) TIP Ø455 - Ø610 (Ø455 Opt.選購)	
軸徑	Bore	mm	Ø25.4	Ø25.4	Ø25.4
銷孔	Pin Holes	mm	—	—	—
送料行程	Feeding Stroke				
單行程	Single Stroke	mm	—	5-650 (26")	0-700(Std.標準) / 10-1000(Opt.選購)
雙行程	Double Stroke	mm	—	5-1300 (51")	連續循環送料
參行程	Three Stroke	mm	—	5-1950 (77")	連續循環送料
送料伺服馬達	Feeding Servo Motor		—	—	1KW
液壓泵馬達	Hydraulic Pump Motor		2HP 4P	3HP 4P	3HP 4P
長度數字顯示裝置	Length Display		—	0 - 650	—
工作壓力	Operation Pressure		20 - 25 kg/cm ²	25 - 35 kg/cm ²	25 - 35 kg/cm ²
機械尺寸	Machine Dimensions (LxWxH)	mm	1300 x 1400 x 1900	1950 x 1300 x 2000	2200 x 1400 x 2200 (Std.標準) 2200 x 1400 x 2500 (Opt.選購)
		mm	1460 x 820 x 2200	1230 x 2270 x 2240	2280 x 1600 x 2250 (Std.標準) 2270 x 2150 x 2240 (Opt.選購)
裝箱尺寸	Packing Dimensions (LxWxH)	inch	30" x 44" x 87"	87" x 52" x 87"	90" x 63" x 89"
淨重	Net Weight	kgs	600 (1320 lbs)	1300 (2866 lbs)	1400 (3086 lbs)
毛重	Gross Weight	kgs	850 (1870 lbs)	1500 (3306 lbs)	1600 (3527 lbs)

The manufacturer always performs product improvements to achieve the best possible performance. All models specifications, dimensions and design characteristics shown in this catalogue are subject to change without notice. Product specifications are based on the actual machines. The manufacturer holds explanation rights.

自動儲存送料裝置 ▶
Automatic Magazine Loader

自動儲存料架 **3.0M~9.0M**
切斷落料架 **0.5M~3.5M**
Custom Automatic Magazine Loader
Length **3M~9M** Weight **3000kgs**
Custom Automatic Outfeed
Length **0.5M~3.5M**

自動排列 ▶
Automatic Line up

自動切斷 ▶
Automatic Cut-Off



可調式儲存料架

- 可依工作大小，形狀調整排列。
- 附單滾輪進料裝置，進料效果優異。

Adjustable Loader Magazine

- Workpiece arrangement is adjustable to meet size and shape variation.
- Equipped with single roller for superior feeding performance.

鋸切能力 Cutting Capacity

	FHC-360AB FHC-360AB-IS	FHC-410AB FHC-410AB-IS
Head Swivel	90°	90°
○ 厚度 T3-T6 mm	75	75
○ 薄管 T3以下 (Opt.選配) mm	90	90
□ mm	60 x 60 - 75 x 75	60 x 60 - 75 x 75
□ mm	40 x 80	40 x 80

FHC-360AB-IS

切鋼鐵專用 Steel Cutting

FHC-410AB-IS

切鋁銅專用 Aluminum Copper Cutting

自動雙邊落料 ▶

Automatic

Outfeeding on

both sides



- 伺服馬達驅動滾輪送料 + 伺服馬達驅動滾珠螺桿驅動止檔器
- 工件與頭料、尾料前後分開落料
- Servo-motor driven roller for feeding + Servo-motor driven ball screw for stopping.
- Workpiece and initial, tail material are separated outfeeding.



型式	Model		FHC-360AB-1S 切鋼鐵專用 Steel Cutting	FHC-410AB-1S 切鋁銅專用 Aluminum Copper Cutting
主軸馬達	Spindle Motor		5HP 4Pole 極A (Std.標準) 5HP 2pole 極B (Opt.選配)	5HP or 7-1/2HP 50/60 HZ
主軸轉速	Spindle Speed	RPM	A L 20RPM-70 (Std.標準) H 35RPM-120RPM B L 40RPM-140RPM (Opt.選配) H 70RPM-240RPM	50HZ / 60HZ 2650-3000RPM
變頻器	Frequency Inverter		5kw / 7.5HP (Opt.選配)	5kw / 7.5HP (Opt.選配)
頭部角度	Head Swivel		90°	90°
夾鉗型式	Vise		Double (雙邊)	Double (雙邊)
冷卻泵馬達	Coolant Pump Motor		40W (1/8P) 或 or 1/2HP ; 40W (1/8P)	40W (1/8P) 或 or 1/2HP ; 40W (1/8P)
虎鉗最大夾持距離	Max. Clamping Capacity	mm	Ø150	Ø150
使用鋸片	Sawblade Size	mm	HSSØ250-Ø400 (10"-14")	TIP Ø355-Ø405 x Ø25.4
鋸片銷孔	Pin Hole of Sawblade	mm	Ø350 (Std.標準) Maximum (最大) Ø400	Ø405 (Std.標準)
選擇性進料速度	Selective Feeding Speed		2 x 11x PCD63 x 32	Ø25.4
送料行程	Feeding Stroke	mm	0-50M	0-50M
液壓泵馬達	Hydraulic Pump Motor		0-2000 (最長Max. 2000-3500)	0-2000 (最長Max. 2000-3500)
工作壓力	Operation Pressure		2 HP (1.5kw)	2 HP (1.5kw)
空壓壓力	Air Pressure		25 - 30 kg/cm ²	25 - 30 kg/cm ²
背料馬達	Material Storage Motor		7 kg/cm ² (120L/min)	7 kg/cm ² (120L/min)
排列馬達	Material Line-up Motor		2 HP (1.5kw)	2 HP (1.5kw)
送料伺服馬達	Servomotor of Feeding		1 HP (0.75kw)	1 HP (0.75kw)
伺服馬達驅動止檔器	Servo-Motor Driven Stopper		(1.5kw)	(1.5kw)
工作台高度	Table Height	mm	(1.5kw)	(1.5kw)
機械尺寸	Machine Dimensions (LxWxH)	mm	900	900
淨重	Net Weight	kgs	9500 x 2400 x 2000 (374" x 95" x 79" inch)	4000 (8800 lbs)



鋒和

FHC
SERIES

鋒和機械

Fong Ho Machinery

圓鋸切斷機專業製造

Circular Sawing Machine Professional Manufacture

台灣總公司

鋒和機械工業股份有限公司

41258台灣省台中市大里區文心南路1191巷12號

Fong Ho Machinery Industry Co.,Ltd.

Tel: 886-4-2406-6769 Fax: 886-4-2406-8858

No. 12, Lane 1191, Wen-Shin South Road,
Tali Dist., Taichung City 41258, Taiwan

www.fongho.com.tw fongho@ms26.hinet.net

中國工廠 台資企業

鋒和機械(張家港)有限公司

215628中國江蘇省張家港市南豐經濟技術開發區204國道南豐段015號

Fong Ho Machinery (Zhang Jia Gang) Co.,Ltd.

Tel: 0512-5827-0871 Fax: 0512-5827-0876

Tel: 0512-5827-0872

No. 015, Nanfeng Segment, 204 Guodao Road,
Economic Development Zone, Zhang Jia Gang,
Jiang Su Province 215628, China

www.fongho.com.cn gsmachine@163.com

中國營銷服務處

廣東 Tel: 0769-8531-3418 Fax: 0769-8531-3419

北京 Tel: 0316-332-2189 Fax: 0316-599-2698

上海 Tel: 021-5437-6048 Fax: 021-5437-6049

寧波 Tel: 0574-8715-6528 Fax: 0574-8715-6875

昆山 Tel: 0512-5737-2050 Fax: 0512-5737-2051

廈門 Tel: 0592-638-6223 Fax: 0592-638-6225

重慶 Tel: 023-6812-2169 Fax: 023-6812-2169

Agents

