

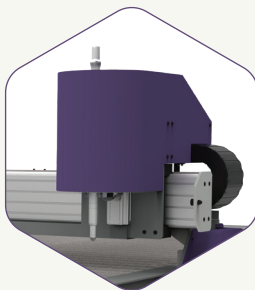
» HORNET LT



BIG PRODUCTIVITY. BIGGER VALUE.

The **HORNET LT** industrial-quality cutting machine provides superior performance at an entry-level price. Through its best-in-class motion, unitized design, and compact footprint the LT brings speed and productivity to shops of all sizes.

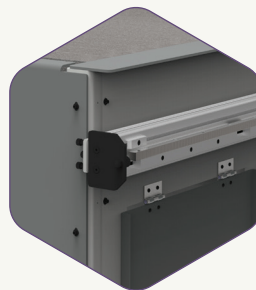
FEATURING



INDUSTRIAL CUTTING

Modular design for quick installation to get you cutting faster.

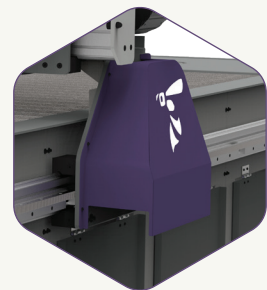
- Full factory assembly
- Standard open bottom table; water tray and zoned duct optional
- Plug and Cut Controls



DURABLE PERFORMANCE

Heavy-duty components will deliver years of dependable service.

- Robust-tube frame construction with 12mm hardened bearing shafts
- Fully enclosed cable power track
- Powder coated metal surfaces



HIGH POWERED FLEXIBILITY

Small operations can harness the power of high-grade industry functionality.

- Standard high-reliability motion package
- Upgradeable to faster speed and high-definition plasma options as your business grows
- Easy-to-operate software control interface and intuitive CAD/CAM drawing/nesting tools



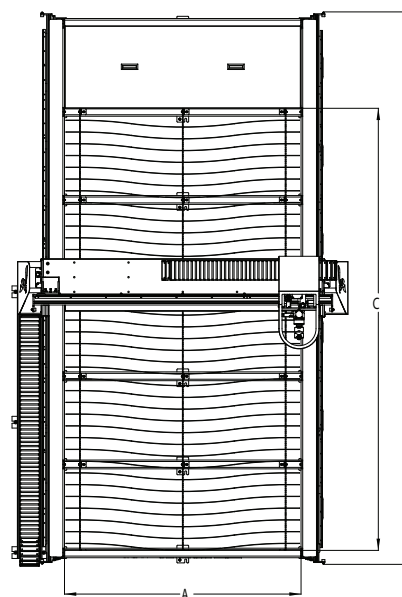
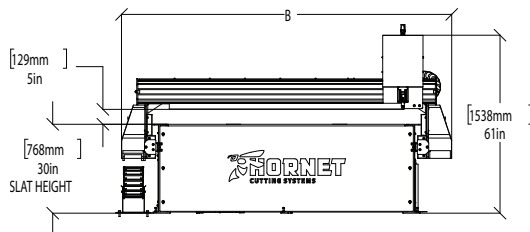
» BUILD SOMETHING GREAT

MACHINE SPECIFICATIONS

	4 ft x 4 ft (1.2 m x 1.2 m)	4 ft x 8 ft (1.2 m x 2.4 m)	5 ft x 8 ft (1.5 m x 2.4 m)	5 ft x 12 ft (1.5 m x 3.6 m)	6 ft x 12 ft (1.8 m x 3.6 m)
Effective Cutting Width (A)	4 ft (1.2 m)	4 ft (1.2 m)	5 ft (1.5 m)	5 ft (1.5 m)	6 ft (1.83 m)
Machine Width Without CNC (B)	7.3 ft (2.25 m)	7.3 ft (2.25 m)	8.3 ft (2.55 m)	8.3 ft (2.55 m)	9.3 ft (2.85 m)
Effective Cutting Length (C)	4 ft (1.2 m)	8 ft (2.44 m)	8 ft (2.44 m)	12 ft (3.66 m)	12 ft (3.66 m)
Machine Length without CNC (D)	8.1 ft (2.49 m)	13.1 ft (4.01 m)	13.1 ft (4.01 m)	15.6 ft (4.78 m)	15.6 ft (4.78 m)
Slat Height	30 in (768 mm)				
Slat To Heat Shield Spacing	5 in (129 mm)				
Machine Height	61 in (1,538 mm)				
Maximum Traverse Speed	750 IPM (19,050 mm/min)				
Maximum Tools	1				
Plasma Power Supplies	Hypertherm® Powermax45XP®, Powermax65®, Powermax85®, Powermax105®, Powermax125®				
Maximum Cutting Capacity	1 in (25 mm) Mild Steel - Power Supply Dependent				
Input Power - CNC & Drives	115/230 VAC 1-Phase 50/60 Hz 10-amp Dedicated Circuit				

OPTIONS:

- Optional zoned down draft table side duct
- Optional water tray
- Optional installation and training by HCS factory personal



Visit HornetCS.com or call **1-844-209-5552** to request a quote



POWERED BY **Hypertherm**

HLT09302018

T 844-209-5552 430 W Clay
P 316-755-3683 Valley Center, KS 67147
F 316-755-1675 Info@HornetCS.com

A Service-Disabled Veteran-Owned Small Business
 ISOQAR Quality Assured ISO 9001 Certificate #14037A5R001